

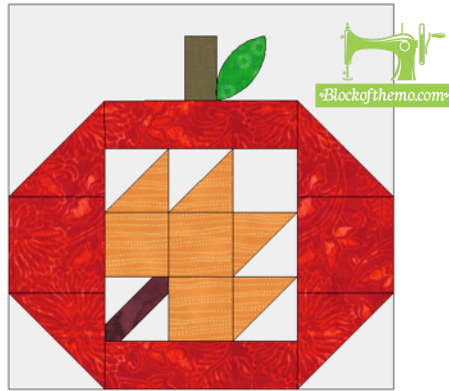
#Quiltblockmania - Back to School



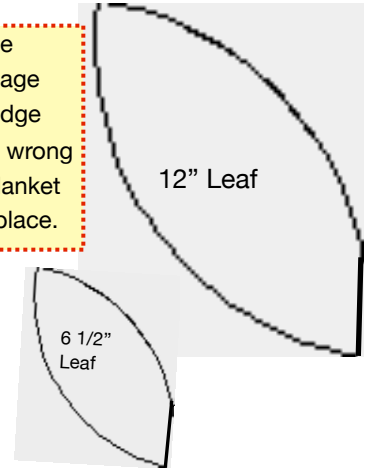
12" Block (12 1/2" unfinished)
Bonus 6 1/2" Block

Fabric Requirements

- Fat Eighths, Fat Quarters or scraps
- 1 ea. Tan (Background)
 - 1 ea. RedRust (Apple)
 - 1 ea. Orange (Leaf)
 - 1 ea. Eggplant (Leaf Stem)
i.e. Drk Purple or Brown
 - 1 ea. Med Green (Apple Stem)
 - 1 ea. Light Green (Apple Leaf)
 - small scrap of H&B Lite



Trace the leaf shape onto the paper side of the fusible. Image has been reversed for raw edge fusible appliqué. Press onto wrong side of the chosen fabric. Blanket or straight stitch the leaf in place.



*Pattern assumes purchaser/quilter has the knowledge to properly sq.'s up HST's

Cutting:

Apple Block 12 1/2" Sq.			Outer Apple (9 1/2" x 12 1/2") - Block (12 1/2")		
	# Pc's	Size		# Pc's	Size
Center Leaf (6 1/2" sq.)			Background (HST'S)	2	4 1/2" Sq.
Background	1	2 1/2"	Background	1	1 3/4" x 12 1/2"
Background (Stem)*	2	2"	Red (HST'S)	2	4 1/2" Sq.
Background (HST'S)	2	3 1/4"	Red	2	3 1/2" Sq.
Orange	3	2 1/2"	Red	2	2" x 6 1/2"
Orange (HST'S)	2	3 1/4"	Green/Drk Purple (Stem)	1	1" x 2 1/2"
Green/Drk Purple (Stem)*	1	2 1/2"	Light Green (Leaf)	1	2 1/2" sq.

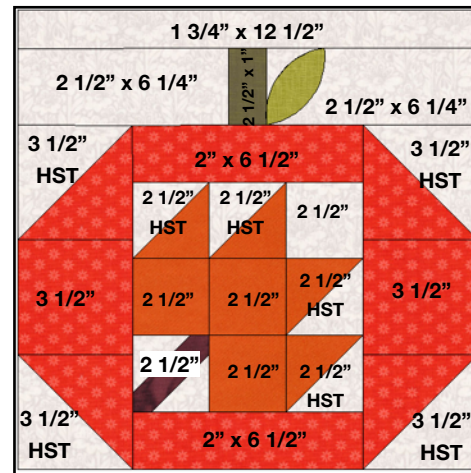
* Used to make the leaf stem, instructions next page

BONUS BLOCK

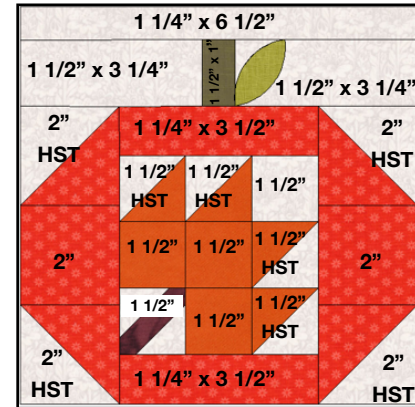
Apple Block 6 1/2" Sq.			Outer Apple (5" x 6 1/2") - Block (6 1/2")		
	# Pc's	Size		# Pc's	Size
Center Leaf (3 1/2" sq.)			Background (HST'S)	2	2 3/4" Sq.
Background	1	1 1/2"	Background	1	1 1/4" x 6 1/2"
Background (Stem)*	2	1 1/4"	Red (HST'S)	2	2 3/4" Sq.
Background (HST'S)	2	2 1/4"	Red	2	2" Sq.
Orange	3	1 1/2"	Red	2	1 1/4" x 3 1/2"
Orange (HST'S)	2	2 1/4"	Green/Drk Purple (Stem)	1	1" x 1 1/2"
Green/Drk Purple (Stem)*	1	1 1/2"	Light Green (Leaf)	1	1 1/2" sq.

* Used to make the leaf stem, instructions next page

12 1/2" size



6 1/2" size



WOF = Width of Fabric - HST'S = Half Square Triangles - RST = Right Sides Together

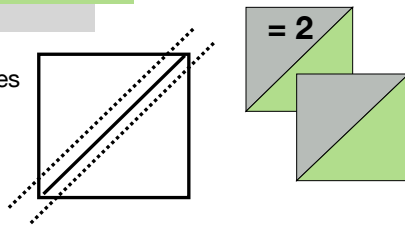
How to Make Half Square Triangles

STEP 1 - Place two sq.'s RST

RST
(Right Sides Together)

I recommend the [What's My Angle Tool](#) for making HST's

STEP 2 - Draw a line across diagonally. Stitch a 1/4" seam allowance on both sides of the drawn line. **CUT** on the drawn line. Yields 2 HST's



Half Square Triangles MUST be trimmed/ squared to size "accurately" otherwise the points will be lost in the seam allowances. See our guide to squaring up/trimming HST's

[Tip Sheet](https://blockofthemo.com/store-2/hsts-tip-sheet/)

4 HST's for the outer Apple 12" Block will be trimmed to 3 1/2";
4 HST's trimmed to 2 1/2" for the inner leaf block

4 HST's for the outer Apple 6" block will be trimmed to 2";
4 HST's trimmed to 1 1/2" for the inner leaf block

Before you begin sewing: TEST YOUR 1/4" SEAM - Using scraps, cut 3 rectangles 2 1/2" wide x 6 1/2" long. Sew together on the long sides. Press & measure. The piece should measure 6 1/2" square. If it measures wider than 6 1/2" (sewn width) adjust your seam.

***Use a 1/4" seam throughout all steps.**

I recommend the [Pinnable Quilt Block Markers](#) or keeping track of the fabrics

ASSEMBLE THE BLOCK:

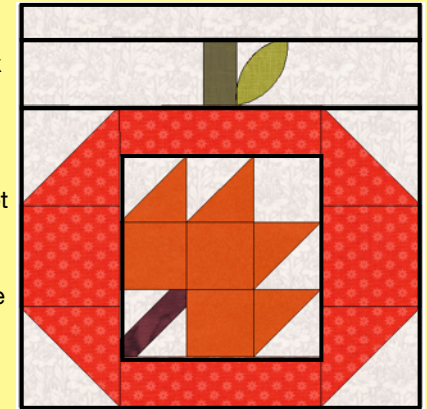
Make the Stem and the HST's for the center leaf block (trim the HST's to size)

Assemble the leaf block for the center like a nine patch (Optional - use a single 6.5" square if you do not want to make the leaf - 3.5" for the smaller block)

Build the Apple around the center leaf block, again like a 9 patch

Make the Apple stem row by stitching one of each of the two background (*stem) pieces to both sides of the stem in the center **Add** to the top of the apple.

Add the final strip at the top. **Trim** to 12 1/2" square, if necessary; trimming evenly off the top of the block



Press the leaf in place, fusible side down onto the RIGHT side of the block.

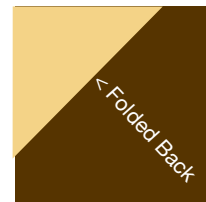
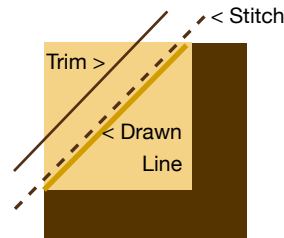
Stitch it with a blanket or zig zag stitch.

TIP: You may want/need to use a small piece of stabilizer on the back of the block under the leaf area to prevent puckering

How to Make the Stem for the inner leaf

STEP 1 - Draw a line from corner to corner on the **WRONG** side of the background squares being used for the stems

Background Fabric



STEP 2 - place a corresponding square on one corner of the brown stem square **RIGHT SIDES TOGETHER**

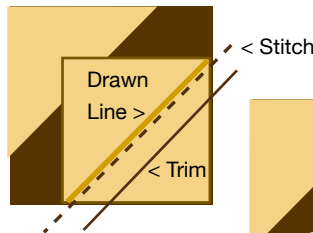
STITCH one threads width away from the drawn line in the seam allowance area (towards the outside of the square)

TRIM a 1/4" seam allowance

FOLD back the corner and press (do not stretch)

NOTE: You may choose to fold back then trim, just be careful to trim the right pieces.

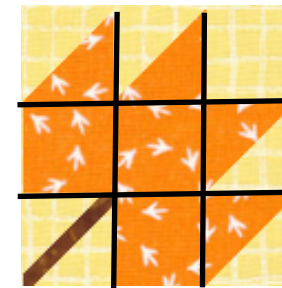
REPEAT for the opposite side



NOTE: The STEM square should maintain it's original size when done. If not, check your stitching, square up to the right size or remake them.

Basic leaf construction:

Sew all leaf the like any other nine patch



< Press this row of seams to the left

> Press seams to the right

< Press seams to the left

Press all final row seams in one direction